



Machine Balancing Report

Single-Plane Method

Date: Mar 29, 2016 10:15:08 AM

Company: GTi

Machine ID: 2plane Test

Technician: Tom

Balancing Data and Results:

(1) Original Imbalance: **0.0447 ips** \angle **132°**

Trial Weight: **0.01 grs** \angle **312**

(2) Vibration w/Trial Weight **0.0558 ips** \angle **135°**

Correction Weight: **0.04 grs** \angle **118**

(3) Vibration after Correction: **0.0031 ips** \angle **243°**

Trim Weight: **0.00 grs** \angle **232**

Trial Weight Radius: **1.00 mm**

Correction Weight Radius: **1.00 mm**

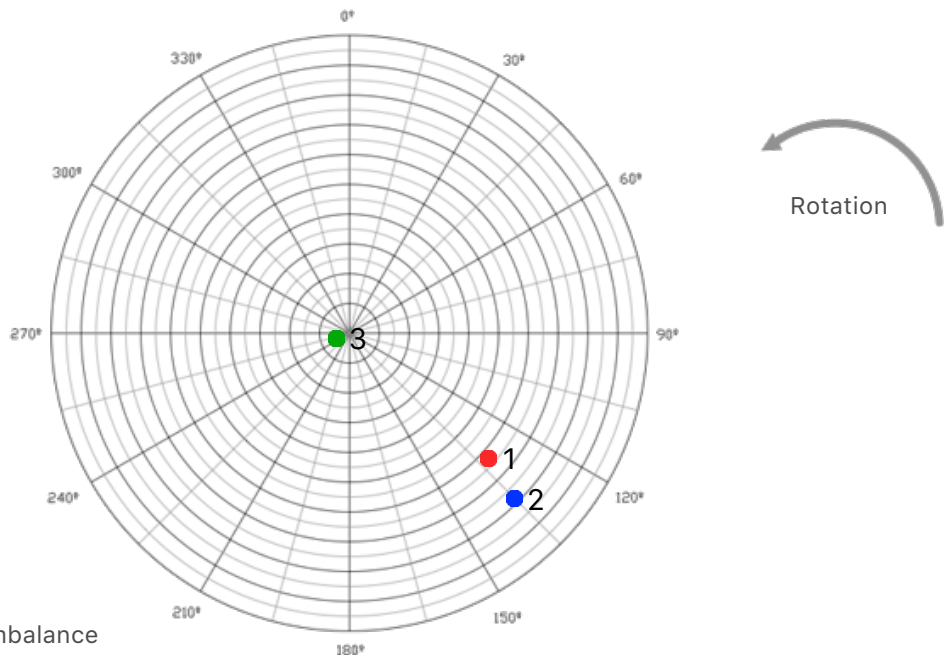
Rotor Weight: **36.00 Kg**

Rotor Balancing Speed: **8250 RPM**

Machine Threshold: **0.0300 ips**

Trial Weight was removed? **YES**

Notes: NA

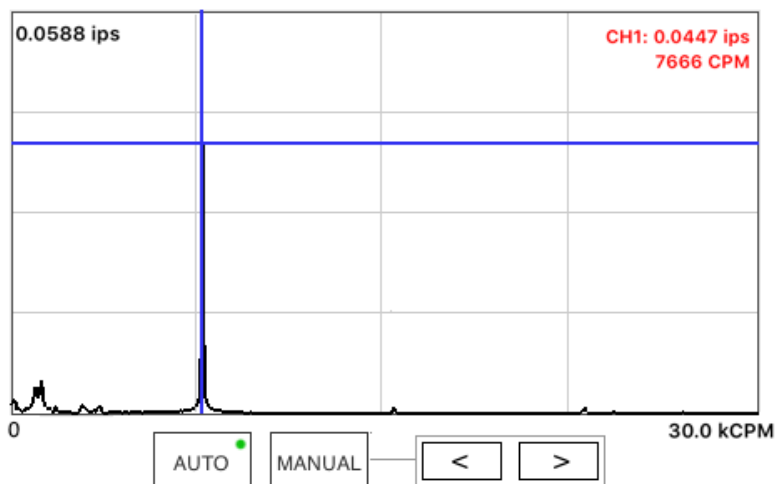


- (1) Original Imbalance
- (2) Vibration with Trial Weight
- (3) Vibration after Correction Weight

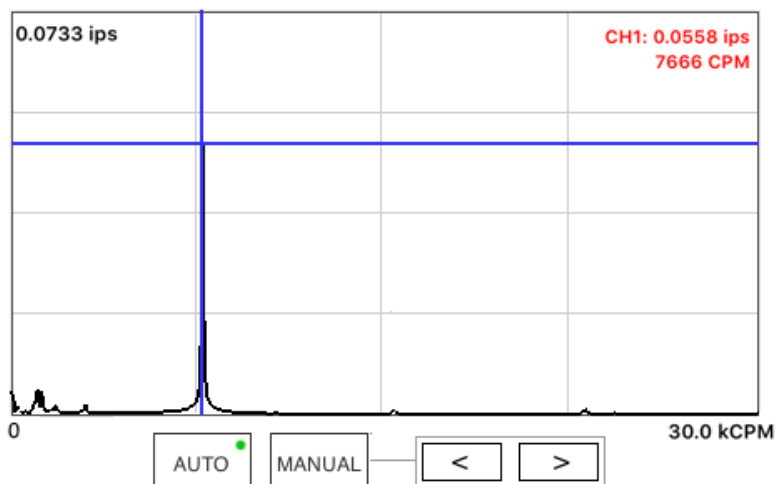
Signature:

Mar 29, 2016 10:25:01 PM

1. Original Vibration Spectrum



2. Vibration with Trial Weight Spectrum



3. Vibration after Correction Spectrum

